



# 2sms IBM Websphere Solution Tech Guide

## About 2sms

2sms allows business customers to send text messages from your computer to cell phones anywhere in the world. We help customers improve operations, demonstrate duty of care, and react more responsively to customers.

Text messaging reaches more people than email and faster than calling.

- ✓ To learn more - [www.2sms.com](http://www.2sms.com)
- ✓ Want a No cost No obligation trial account? – [www.2sms.com/register](http://www.2sms.com/register)
- ✓ For technical information - [www.2sms.com/software](http://www.2sms.com/software)



For Help, call 2sms on 877-276-7266 (USA), 0800 65 222 77 (UK) or +44 1234 757 800 (Rest of World) or email [support@2sms.com](mailto:support@2sms.com). Support is available 24/7.

## System Requirements

IBM Websphere version 4 or 5  
Installation requires the user to have a 2sms account, this can be setup by visiting [www.2sms.com/register](http://www.2sms.com/register)  
Or by calling support

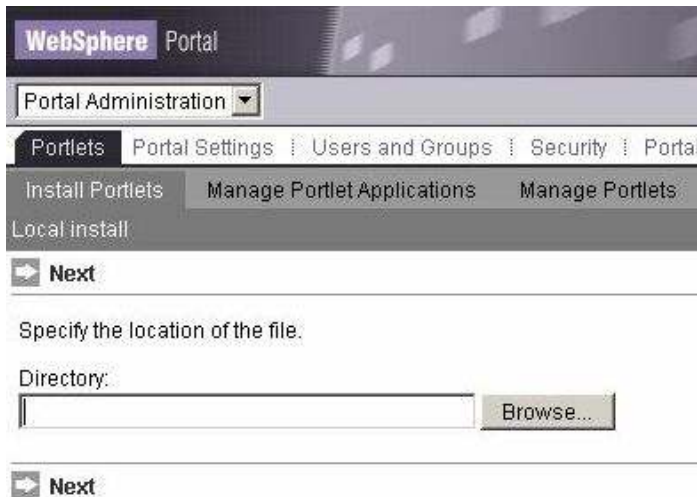
## Installation

### Deploy the WAR File

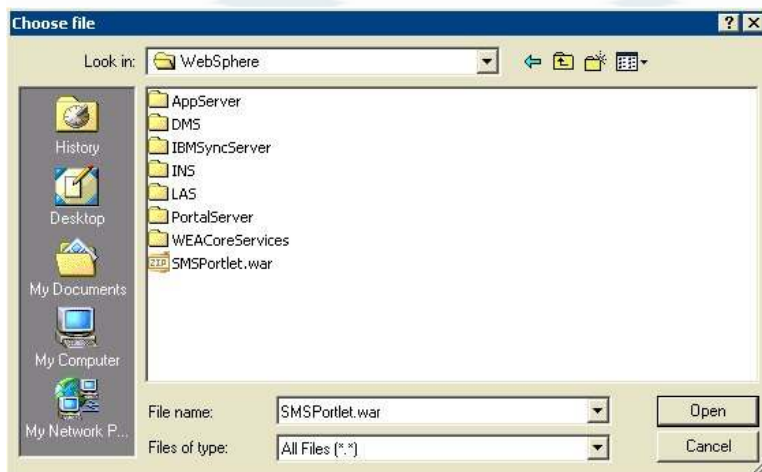
Login to the portal as the portal administrator -- wpsadmin.  
Select the Portal Administration page group.  
Select the Portlets page and the Install Portlets portlet. It should be selected for you.



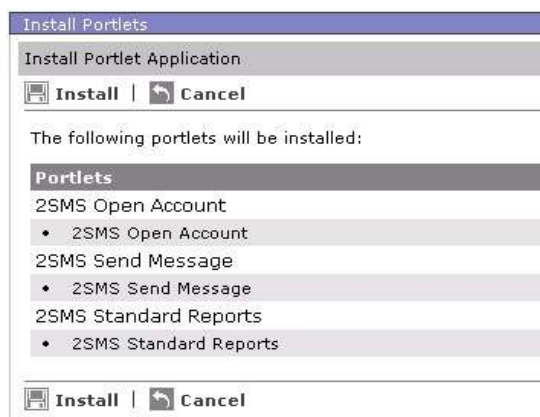
Customer Doc #	SAL-124
Issue No./Date	1.0 09-Feb-07
Classification	N/A



Select Browse.  
Find the location of WAR file, select it, and click Open.



Select Next. This may take some time.  
Verify that the Portlet appears as shown below. Click Install.



Customer Doc #	SAL-124
Issue No./Date	1.0 09-Feb-07
Classification	N/A

Finally, you should see this confirmation:

✓ Portlets successfully installed.

### Configure SMS Authentication Details

Select the 'Portal Administration' page group.

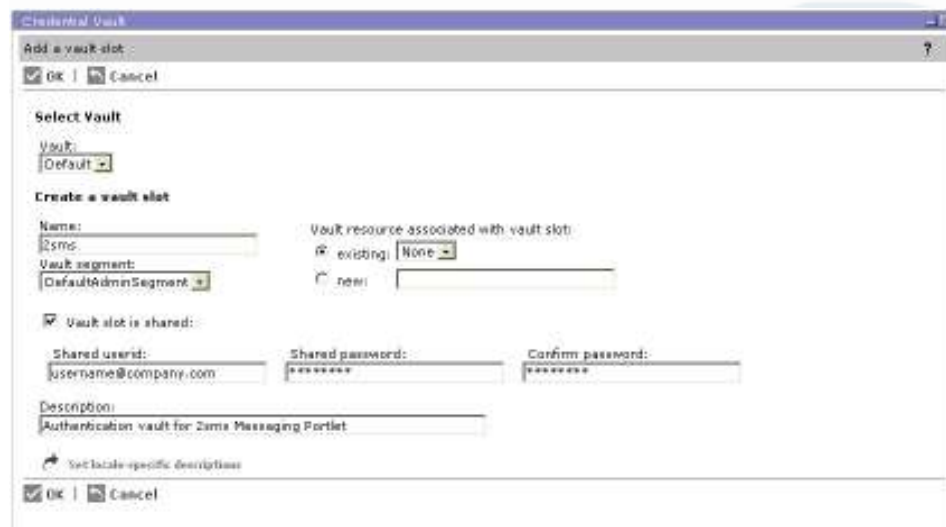
Select 'Credential Vault' within the left had side menu.



Select 'Add a vault slot'.



Enter the details as show below. The vault slot name should be '2sms'. You should also ensure that 'Vault slot is shared' is ticked, and the authentication details of your account (username and password) are entered correctly.



## Configure Proxy where Required

In the file sms.properties, configure the following settings as required by your proxy server. If no settings are required (no proxy is used to access the internet), comment out each line by prefixing it with the # character. If a proxy is used, but no authentication is required, simply comment out the proxyUsername and proxyPassword lines.

```
proxyHost=192.168.1.1
proxyPort=8080
proxyUsername=username
proxyPassword=password
```

## Configure the Available SMS Contacts

Edit the properties files, which can be found in the deployed portlet classes directory. For example :

```
<InstallRoot>\installedApps\SMSPortlet_WPS_PA_501.ear\SMSPortlet.war\WEB-INF\classes
```

In the file **smsldap.properties**, configure the location and authentication details of your LDAP server. For example :

```
java.naming.security.principal=wpsadmin
java.naming.security.credentials=wpsadmin
java.naming.provider.url=ldap://ldapserver.mycompany.com/
```

In the file sms.properties, set the value ldapPath to refer to the location within your directory where your contact list resides. Set the ldapFilter to an appropriate value for your environment. Standard LDAP syntax applies.

If the portlet can successfully access your directory given these values, it will attempt to retrieve any items in your directory which match the path and filter. Only items with an entry in the 'mobile' field will be displayed. If the portlet fails to connect to your LDAP server, no contacts will be displayed to your users.

Customer Doc #	SAL-124
Issue No./Date	1.0 09-Feb-07
Classification	N/A

## Send a Message from the 2sms IBM Websphere Portlet



The screenshot shows a web browser window titled "2SMS Send Message". The page has a header "2SMS Send Message" and a sub-header "Please fill in all the mandatory fields, which are marked with a \*", then submit the form to send your message.

The form contains the following fields:

- Destination Phone Number\*:** A text input field.
- Destination List for Bulk Send:** A list box containing the names: Daniel Wray, Paul Edwards, Phil Bennett, Catherine Lookies, and Tim King.
- Message(max: 160)\*:** A large text area for the message content.
- Count:** A text input field with the value "160".
- Segmentation Code:** A text input field.
- Date(mm/dd/yyyy) and time(hh:mm) to Send:** Two sets of dropdown menus for selecting the date and time.
- Submit:** A button to submit the form.

The 2sms Send Message portlet can be used to send text messages to one, or many recipients who have been configured in the address book from your company directory. If no contacts appear on the portlet, the portlet may have been incorrectly configured with your directory. A contact list is not required to send text messages from the portlet.

1. Select the contacts you wish to send a message to from the list shown.
2. To select multiple contacts, use the ctrl/shift keys to highlight each name.
3. If you wish to send to a contact that is not in the list, enter their mobile phone number in the box provided (at the top).
4. Type your message in the box provided. This must be at most 160 characters long, as this is the limit of an SMS message. If you wish to send a longer message, you must break it up into smaller chunks and tell the recipient which part they are receiving (2/3 for instance).
5. You may enter an optional message reference in the 'Segmentation Code' area. This can be used to report on at a later date.

If you wish to delay sending of your message until a later date, enter the details in the boxes provided and click 'Submit' to send your message.

## 2sms Message Reports Portlet



**2SMS Standard Reports**

Please fill in all the mandatory fields, which are marked with a '\*'. Also enter Segmentation for report 'Messages By Segmentation' and start and end dates for report 'Messages Between Dates', then submit the form to **request** the desired report.

Report Name\*:

Segmentation Code:

Start Date (mm/dd/yyyy):

End Date (mm/dd/yyyy):

In order to extract a report on the messages you have sent using the 2sms service, select the required report from the drop down list. If the report requires additional parameters to be completed, such as 'Messages Between Dates' then these must be completed in full, in the areas provided. Once completed click 'Submit' to run the report. The results will be displayed to you as soon as your data has been collated.